



**Freehold, 28 Harrington Close, Herne Bay, CT6 6DR**  
**£258,500**



## Freehold, 28 Harrington Close, Herne Bay, CT6 6DR £258,500

Two Bedroom End of Terrace Home in a Popular Meadow View Location

This well-presented two-bedroom end-of-terrace home is situated on the ever-popular Meadow View development, offering an excellent opportunity to acquire a modern home in a sought-after residential location.

The accommodation is thoughtfully arranged and comprises an entrance hall, cloakroom/WC, a modern kitchen, and a spacious sitting/dining room with access to the rear garden. To the first floor, there are two generous double bedrooms and a family bathroom.

Externally, the property enjoys a secluded rear garden, perfect for relaxing or entertaining, along with the added benefit of allocated parking. Further features include gas central heating and double glazing.

An ideal opportunity to purchase a well-maintained home in a desirable development, conveniently located for local amenities and transport links.

\* Currently Shared ownership - This price is advertised at 100% ownership. If you would like more information about shared ownership, please speak to the team at Zest Homes. \*

## Description

Sitting/Dining Room  
15'10 x 13'6

Kitchen  
12'6 x 10'10

Cloakroom/WC

Bedroom  
13'5 x 12'6

Bedroom  
13'6 x 9

Bathroom/WC  
6'11 x 6'6

Allocated Parking

Council Tax Band C

EPC Rating C

Tenure Freehold

### Location

Nestled on Kent's picturesque north coast, Heme Bay offers the charm of a traditional seaside town combined with the ease of modern living. Just over 90 minutes from London by train, with excellent connections via the A299 and M2, Heme Bay provides an ideal balance: the tranquility of the coast with swift access to the capital and beyond.

### A Vibrant Seafront Lifestyle

The seafront is the town's crown jewel – a sweeping promenade lined with colourful beach huts, expansive shingle beaches, and uninterrupted sea views. Residents enjoy invigorating morning walks along the pier, leisurely afternoons on the beach, and golden sunsets across the bay. For those with an active lifestyle, sailing, paddleboarding, and cycling along the coastal trails are on the doorstep.

### Dining & Social Experiences

Heme Bay has evolved into a hub of sophisticated seaside dining. From elegant seafood restaurants serving the day's catch to stylish cafés and wine bars perfect for evening gatherings, the town offers a growing collection of culinary highlights. Local bistros and family-run establishments sit alongside contemporary eateries, creating a dining scene as diverse as it is refined.

### Things to See & Do

Life in Heme Bay is steeped in heritage and leisure. Explore the iconic clock tower, one of the oldest purpose-built seaside landmarks in the UK, or Reculver Towers. Boutique shops, art galleries, and weekly markets bring a sense of community vibrancy, while nearby Whitstable and Canterbury offer further opportunities for further Boutiques and High Street shopping.

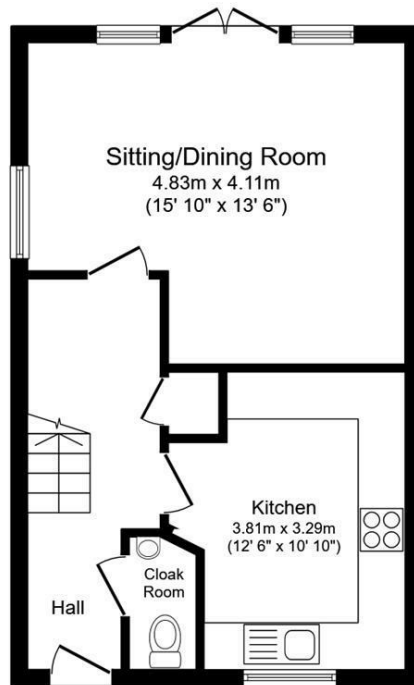
### The Essence of Seaside Living

Heme Bay embodies coastal living at its finest – a blend of relaxation, recreation, and refinement. With the sea at the heart of daily life and London within easy reach, it's the perfect location for those seeking a stylish seaside retreat without compromising on connectivity or convenience.

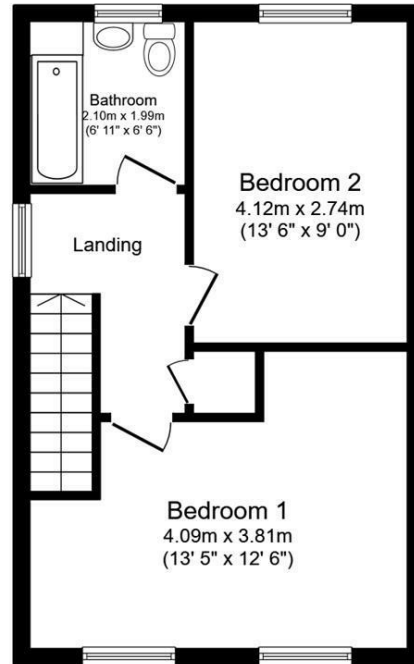
### Agents Notes

1. Money Laundering Regulations: Please note all sellers and intended purchasers will receive an 'On Boarding' link to verify their identity. This is a legal requirement prior to a sale or purchase proceeding. 2. All measurements stated on our details and floorplans are approximate and as such, can not be relied upon and do not form part of any contracts. 3. Zest Homes have not tested any services, equipment, or appliances, and it is, therefore, the responsibility of any buyer/tenant to do so. 4. Photographs and marketing material are produced as a guide only, and legal advice should be sought to verify fixtures and fittings, planning, alterations, and lease details. 5. Zest Homes hold the copyright to all advertising material used to market this property. 6. It is the responsibility of the buyer to obtain verification of the legal title of the property via their solicitor.





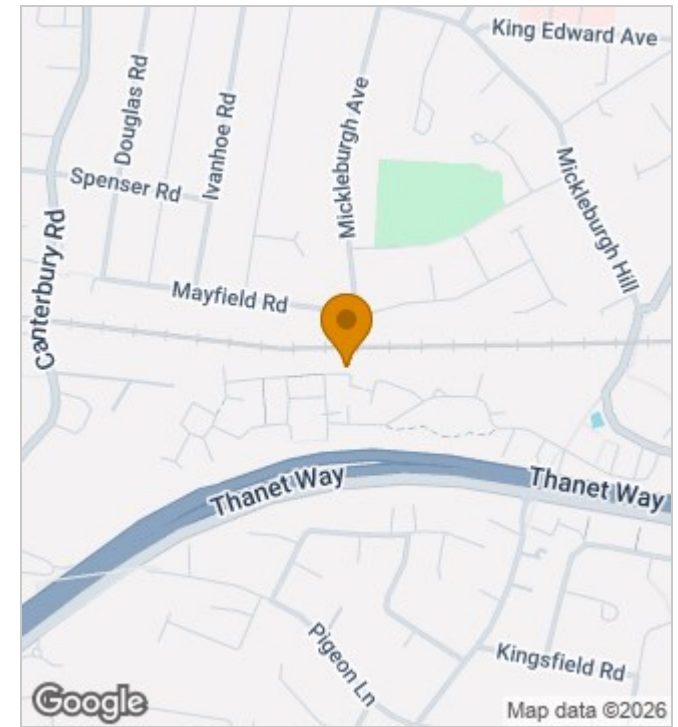
**Ground Floor**  
Floor area 38.8 sq.m. (417 sq.ft.)



**First Floor**  
Floor area 38.8 sq.m. (417 sq.ft.)

Total floor area: 77.6 sq.m. (835 sq.ft.)

This floor plan is for illustrative purposes only. It is not drawn to scale. Any measurements, floor areas (including any total floor area), openings and orientations are approximate. No details are guaranteed, they cannot be relied upon for any purpose and do not form any part of any agreement. No liability is taken for any error, omission or misstatement. A party must rely upon its own inspection(s). Powered by www.Propertybox.io



**Energy Efficiency Rating**

	Current	Potential
Very energy efficient - lower running costs		
(92 plus) <b>A</b>		<b>92</b>
(81-91) <b>B</b>		
(69-80) <b>C</b>	<b>80</b>	
(55-68) <b>D</b>		
(39-54) <b>E</b>		
(21-38) <b>F</b>		
(1-20) <b>G</b>		
Not energy efficient - higher running costs		
<b>England &amp; Wales</b>	EU Directive 2002/91/EC	

190 High Street, Herne Bay, Kent, CT6 5AP  
Tel: 01227 949291 | Email: michelle@zesthomes.uk  
www.zesthomes.uk

1. Money Laundering Regulations: Please note all sellers and intended purchasers will receive an 'On Boarding' link to verify their identity. This is a legal requirement prior to a sale or purchase proceeding.
2. All measurements stated on our details and floorplans are approximate and as such can not be relied upon and do not form part of any contracts.
3. Zest Homes have not tested any services, equipment or appliances and it is therefore the responsibility of any buyer/tenant to do so.
4. Photographs and marketing material are produced as a guide only and legal advice should be sought to verify fixtures and fittings, planning, alterations and lease details.
5. Zest Homes hold the copyright to all advertising material used to market this property.